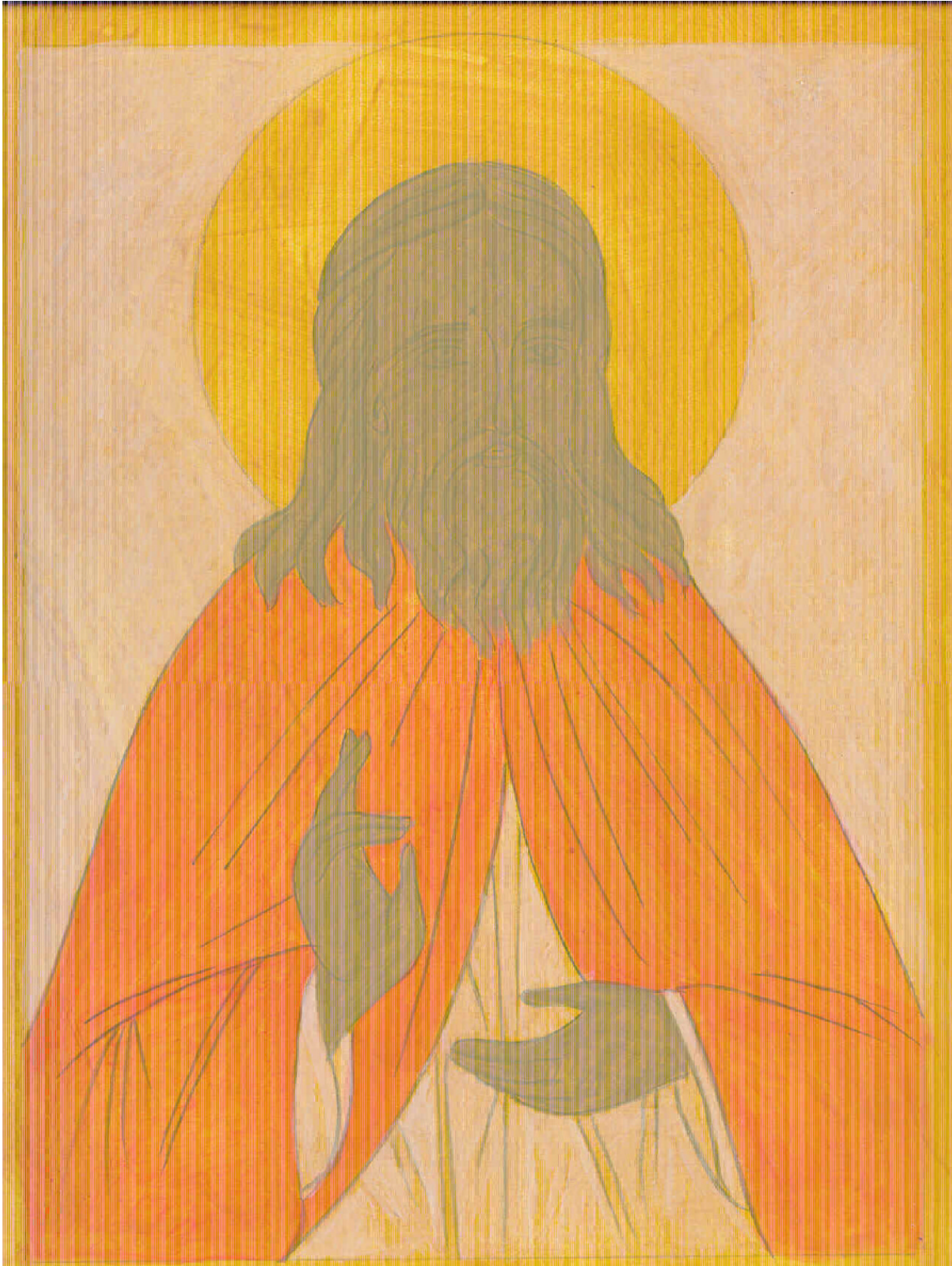


## St. Herman Wash and Base Colors



### Line Drawing with Base Colors

Once a line drawing is transferred to a gessoed board, the base colors are added. Adding the base color is very much like a paint by number painting. The image will appear very flat and dark. All icons are painted from dark to light. An iconographer attempts to reveal the light of Christ that shines through the person depicted in the icon, in successive series of highlights.